

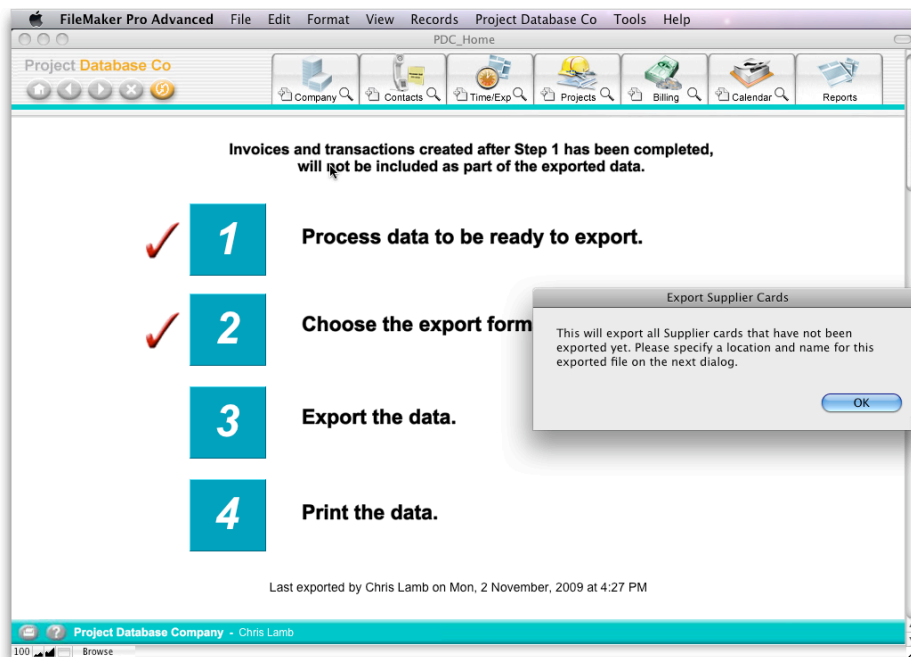
# Project Database Co

Developer of  
ExhibitOffice + ManagEvent

## Accounting Export - MYOB

The Accounting Export is easy to use. It is a simple multiple step process.  
This version is for MYOB clients.

- 1 Press button "1" The database will find all the transactions in the system that have not yet been exported. When the "Tick" appears next to "1" move onto step 2
- 2 Select the Output format from the drop down and press button "2" once a "Tick" appears next to "2" move onto step "3" Before you do create an "Export" Folder on your desktop to export the data to.  
MYOB for PC Users, MYOB AccountEdge for Mac Users
- 3 Press button "3" and each of the exports will be done in order



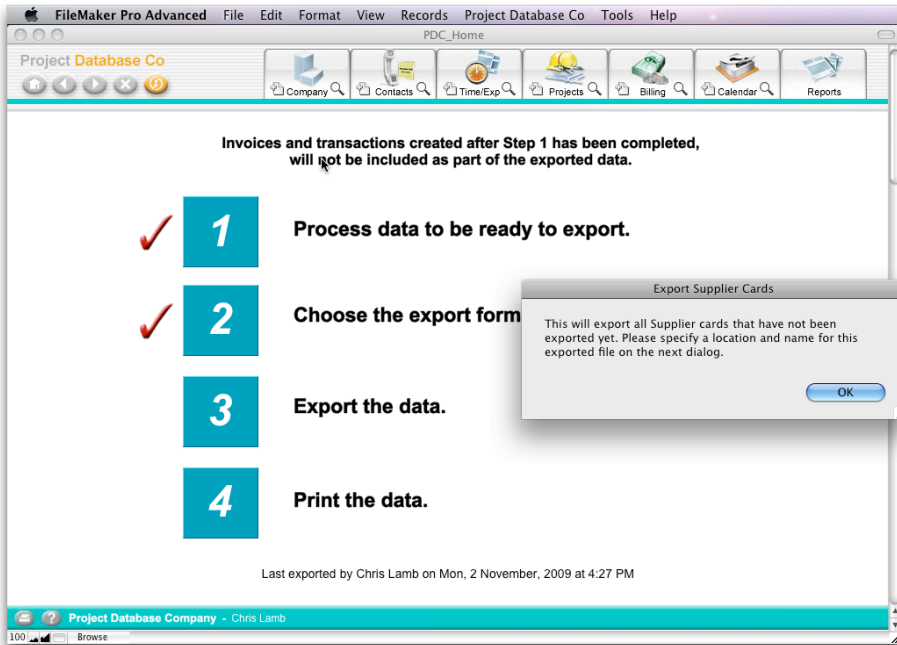
First is Supplier Cards / Client Cards / Sales / Orders / Payments

Save these as txt files into your desktop or into an Export Folder you have opened on your desktop.

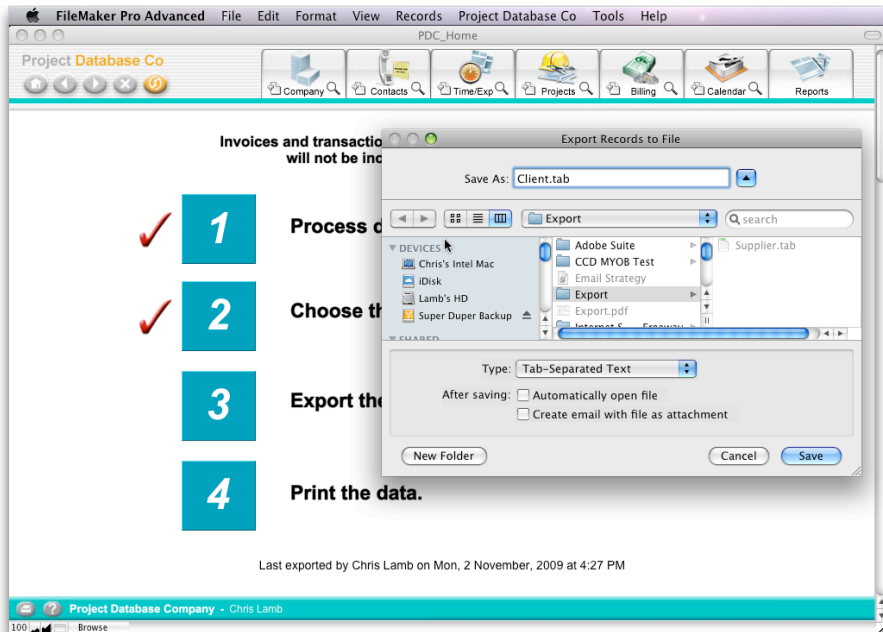
# Project Database Co

Developer of  
ExhibitOffice + ManagEvent

This is what the first of the export screens looks like



This is showing the exported files being saved.

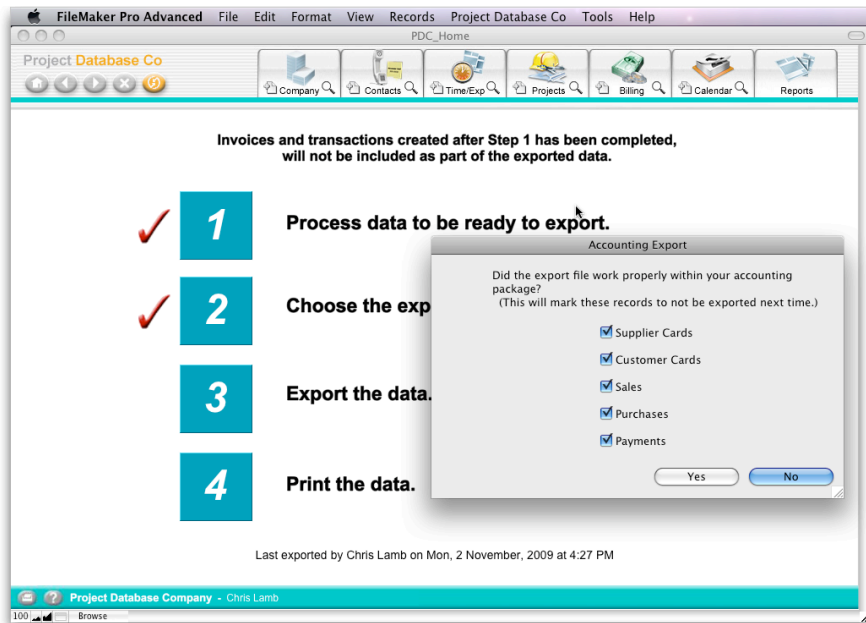


If there are no new cards then these will not be exported

# Project Database Co

Developer of  
ExhibitOffice + ManagEvent

Once all the data has been exported you will be taken to the “Happy Screen” Leave this screen sitting here Do Nothing until you have imported the data into MYOB, or alternatively click “No” as you can always export the data again if it goes into MYOB safely.



When learning the export process use a copy of your accounting data and do not click on “No” on the Happy Screen, this way you can do any number of exports without making changes to either your accounting data or the database.

Once you have clicked yes all the records will be marked as exported.

Once exported you may import the data to MYOB

Import them in the order they were exported

Suppliers

Clients

Sales

Orders

Payments

This will ensure that the data is imported in the logical order.

For Importing Sales Orders & Payments set the import Detail to Card ID  
not Co/Last Name

# Project Database Co

Developer of  
ExhibitOffice + ManagEvent



## Versions Supported

AccountEdge (Mac Version) we support from Version 8 or greater

Accounting Plus (PC Version) we support Version 17 or greater



## Quickbooks

We currently do not support the same level of functionality it is under development.