

Project Database Co

Developer of
ExhibitOffice + ManagEvent

Peer-to-Peer Host Install - & Single User Install

We highly recommend that if you intend to have more than 4 users connecting to the database simultaneously, that you upgrade to FileMaker Server software. A peer-to-peer configuration will be unstable with more than 4 users and is prone to problems. The Database is too large an application to share in a peer-to-peer configuration with a large group of users.

We also highly recommend that if you intend to have more than 1 user connecting to the database simultaneously, that you install the database on the "least used" workstation (called the P2P Host). This is because running other applications on the P2P Host at the same time as users are accessing the database over the network, will severely hinder performance and stability. Ideally, you want a dedicated P2P Host, where no one is working with any other applications other than the Database.

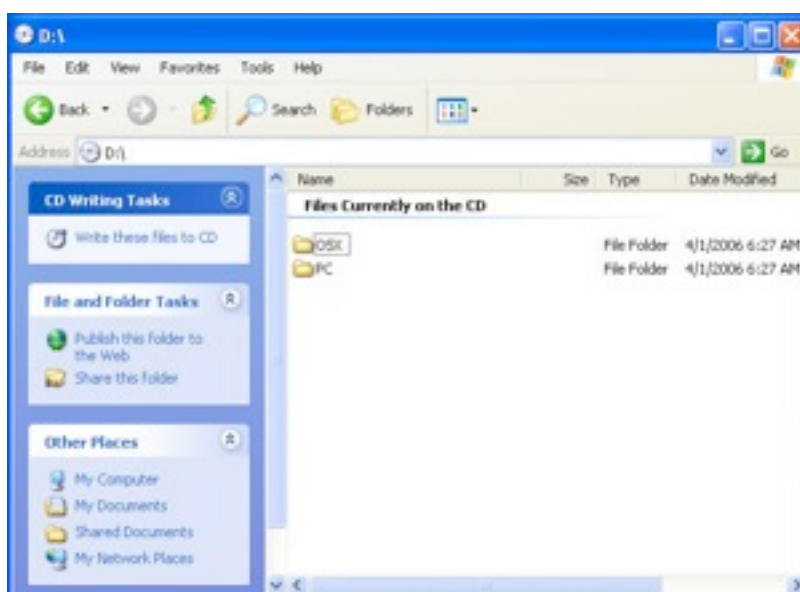
Permissions must be set in the P2P Host machine so everybody can read & write to the database.

- To learn how to backup your data, go to the "Backup" section of the manual.

Check the minimum "Computer Requirements" for a client installation.

Steps to Install:

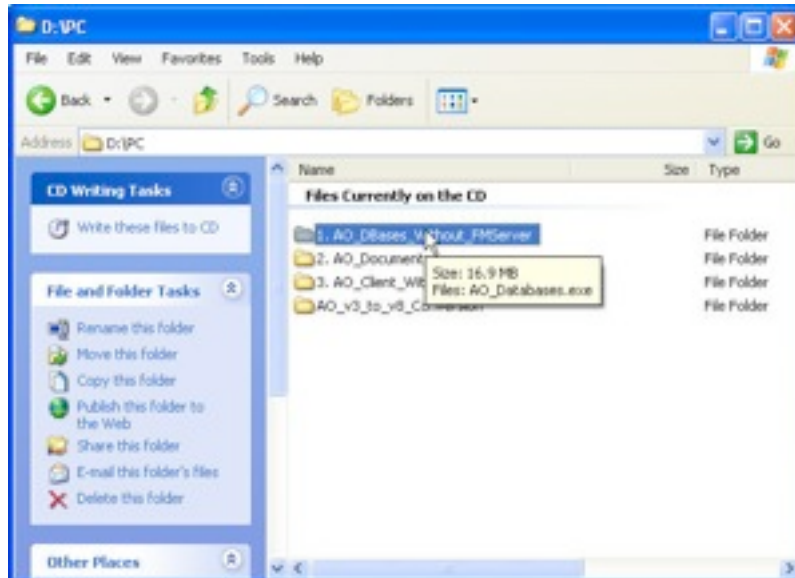
1. Login to the workstation as a user with full admin privileges. You need to perform the installations as an Administrator.
2. Disable all Antivirus software and quit all running applications.
3. Insert the Database installation CD into your computers CD/DVD drive.



Project Database Co

Developer of
ExhibitOffice + ManagEvent

4. Open the appropriate folder for your operating system on your installation CD.



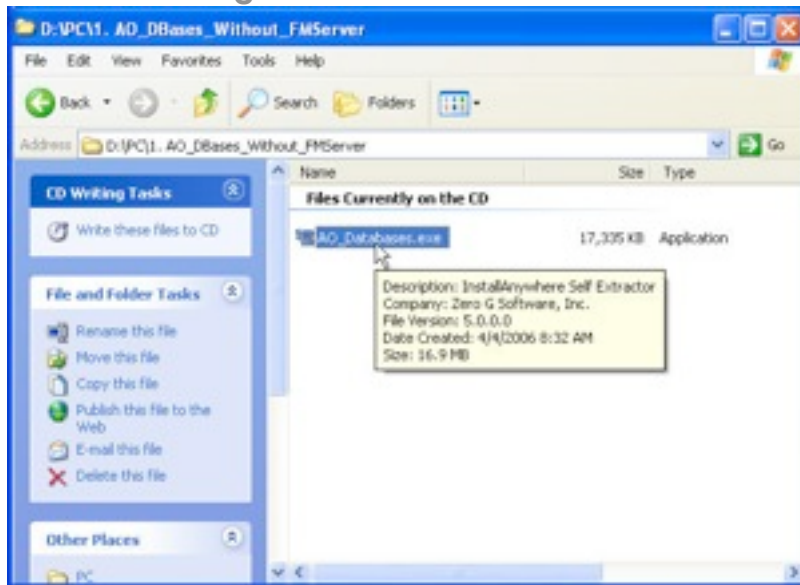
5. To learn how to properly backup your databases, go to the “Backup” section of the manual

You will want to backup your Database files on a daily basis. To do so, you must first quit the database on the Host Workstation. Then, copy the Database files located on your main drive to a suitable backup location or device. You must then restart the database by clicking on the desktop shortcut.

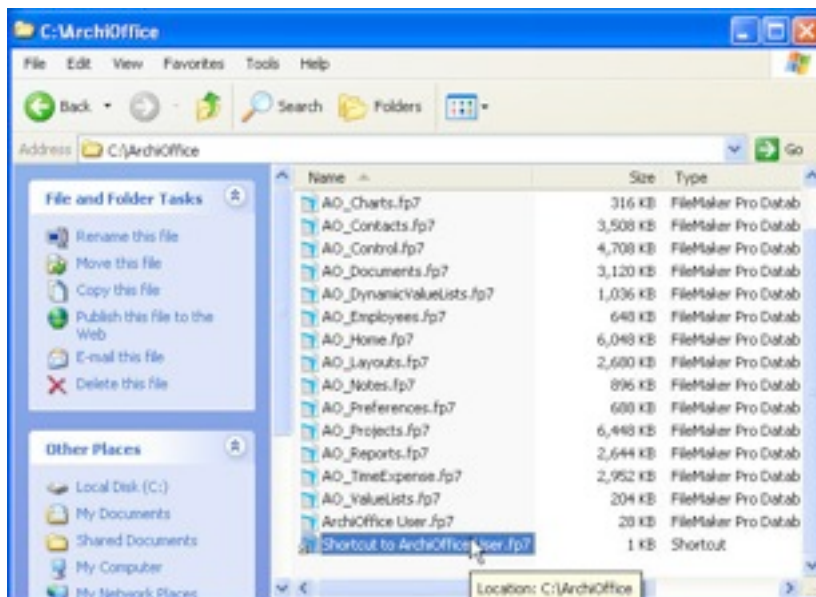
Never attempt to backup the files while the database is running on the Host Workstation, or if anyone else on the network is currently running it. To do so will damage your files.

Project Database Co

Developer of
ExhibitOffice + ManagEvent



6. You must always launch the database on the Host Workstation and completely Login before any other user can connect to it on the network. To do this, make yourself a shortcut (or alias for the Mac) to the "PDCOffice_User.fp7" file located in the "Database" folder (default install location is "c:\database" for Windows). Put this on your desktop so you can conveniently launch the database.

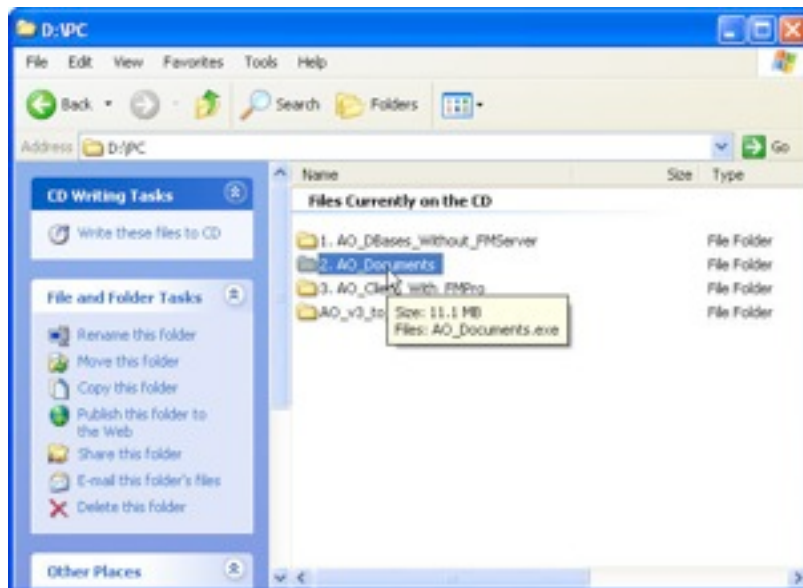


7. Next, we want to install the "Documents" folder. This folder contains all the master Word/Excel templates used for document creation, and also serves as the primary storage location for all documents and correspondence created by users in the database. Ideally, this should be installed on your file server, a different computer/drive from where your main databases are located. It can be moved at any time (you point to its location in the database Preferences), but all users must have full read/write access to this folder/drive.

Return again the PC folder and open the "2. AO_Documents" folder.

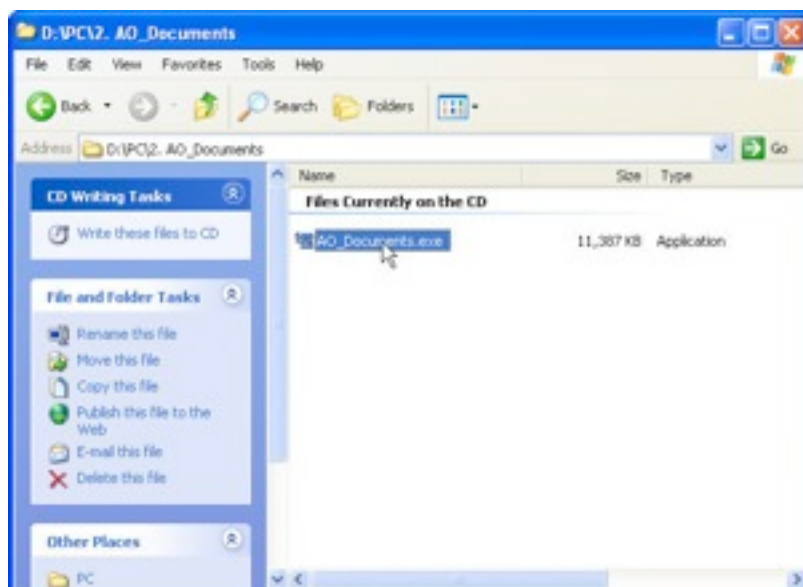
Project Database Co

Developer of
ExhibitOffice + ManagEvent



8. Launch the "Documents.exe" installer application and install the "Documents" folder to the file server location you have chosen to use. The default is the root level of the current drive ("c:\\" for Windows).

You need to backup the "Documents" folder nightly. It contains all your important documents associated to your Contacts and Projects.

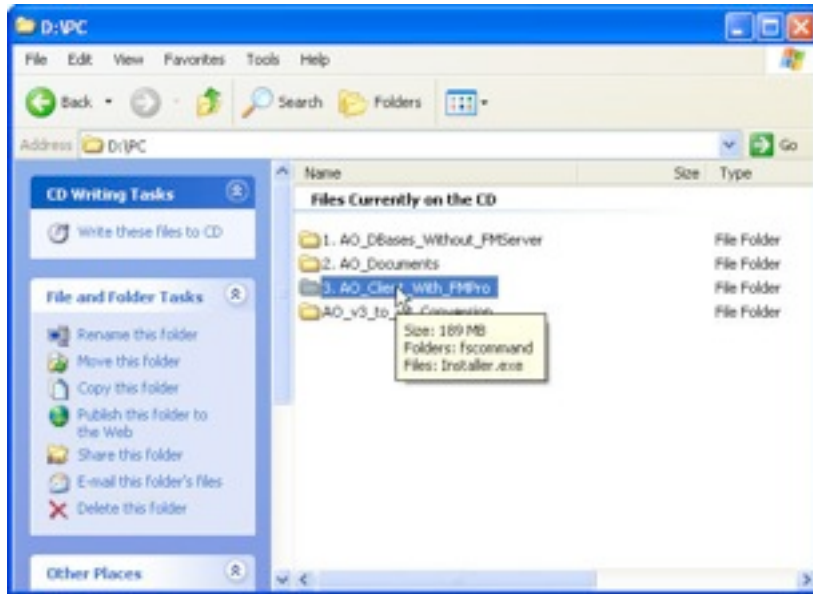


9. The next step is to install the Database Client software.

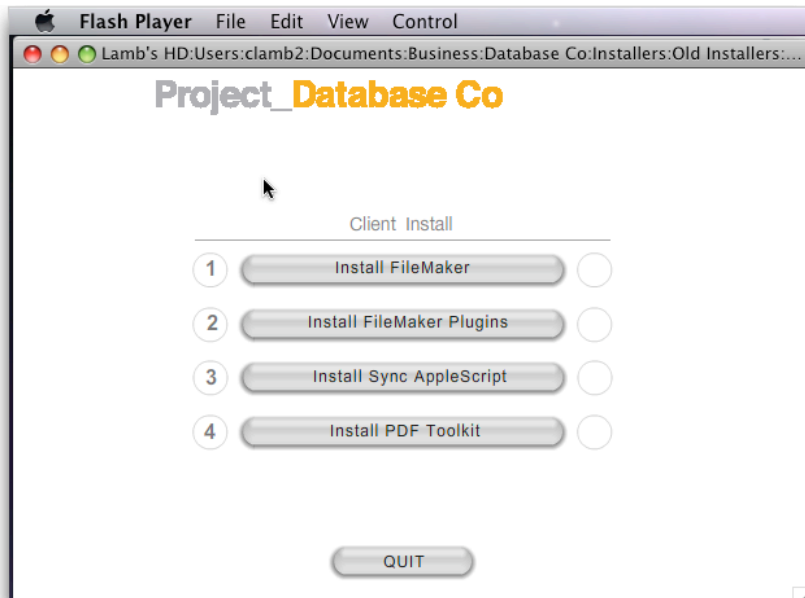
To install the Database Client software, return to the "PC" folder level and select the "PDC_Client_with_FMPro" folder if you purchased the FileMaker Pro 10 software from us, or the "PDC_Client_without_FMPro" folder if you purchased FileMaker Pro 10 elsewhere.

Project Database Co

Developer of
ExhibitOffice + ManagEvent

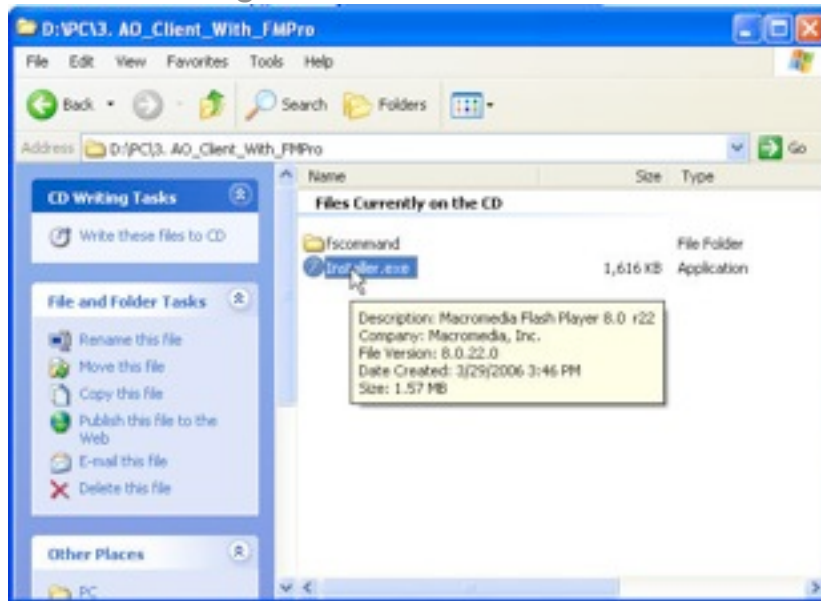


10. Launch the "Installer.exe" application.



Project Database Co

Developer of
ExhibitOffice + ManagEvent



11. Install all the components listed on the menu, in the order they are specified. OSX users will see "Applescript Sync" instead of "OutlookOps", and if you did not purchase FileMaker Pro 10 from us, then your first step would be to install the "FileMaker Pro Plugins".

Agree to any licenses you are presented with, and install the applications into the default locations.

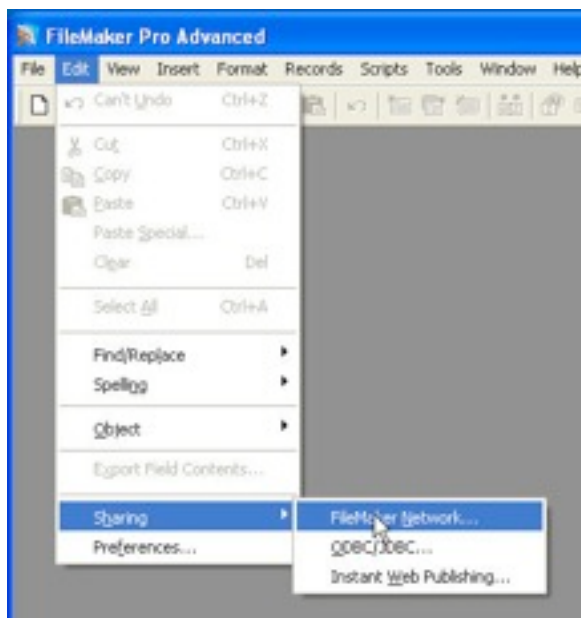
12. Mac OSX Users: You need to give all users full read/write privileges to the FileMaker Pro 10 folder. By default, they will not have write privileges to many of the subfolders installed.
13. When FileMaker Pro is installed, it will be installed with Network Sharing turned off. You need to turn this on. To do so, follow these steps:
 - Open FileMaker Pro all by itself. Windows users can launch it by using the "START: Programs" menu. Mac OSX users can launch the FileMaker Pro application from their "Applications" folder where it will have installed.
 - When you first open FileMaker Pro, you will be presented with a dialog that you should dismiss with the "Cancel" button.

Project Database Co

Developer of
ExhibitOffice + ManagEvent



- Access the FileMaker Pro Edit menu, and select "Sharing: FileMaker Network...".

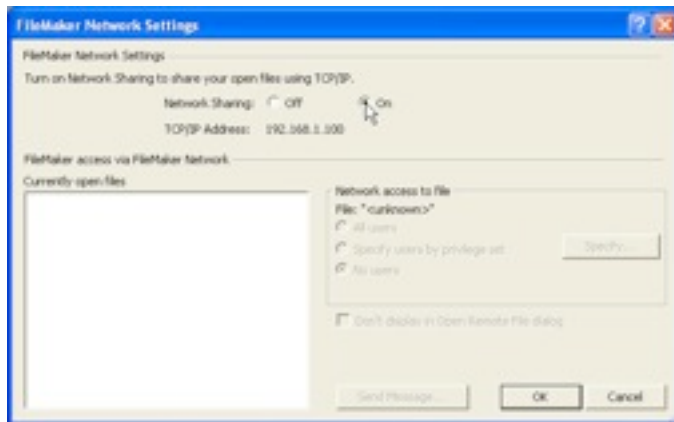


Project Database Co

Developer of

ExhibitOffice + ManagEvent

- Set the "Network Sharing" option to "On".



- You have now configured the FileMaker Pro application to share files over the network.
 - Keep in mind that FileMaker Pro shares files using Port 5003. If you have a firewall running, you need to make certain that this port is open for FileMaker, if you intend to share the files with other users.
- You have completed the P2P Host or Single-User installation.



It has beeDatabase system or functions. This is due to the fact that although the Mac OSX system is saying that the "Database" folder, the "Documents" folder, and the local "FileMaker Pro 10" folder, and all their respective subfolders, have been configured to enable all users read/write access, that this is not the case. You need to use the tool described in Tech Bulletin 060206 to correct the problem.



All Database users must have full read/write access to their FileMaker Pro folder for document management to work.