

Project Database Co

Developer of
ExhibitOffice + ManagEvent

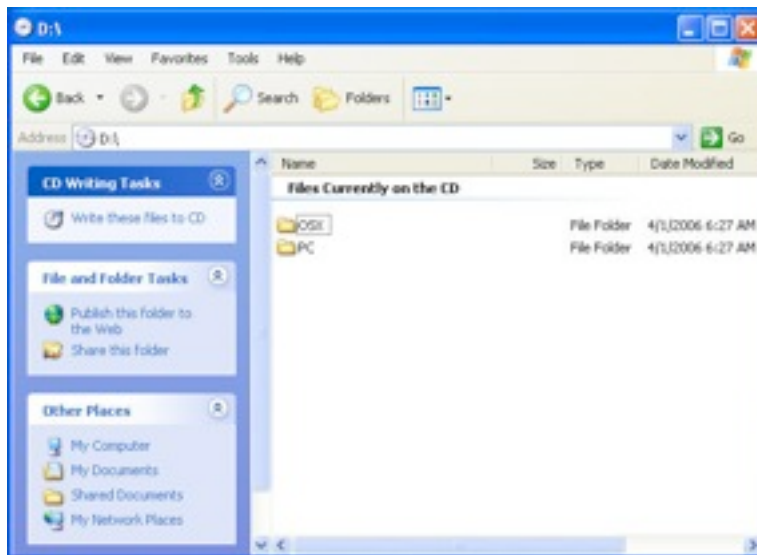
Client Software - How To Install

You must run this installation procedure on every workstation that is going to run the database, regardless of whether you are running the application on a server or a peer-to-peer network.

Check "Computer Requirements" for the minimum requirements for a client installation.

Steps to Install:

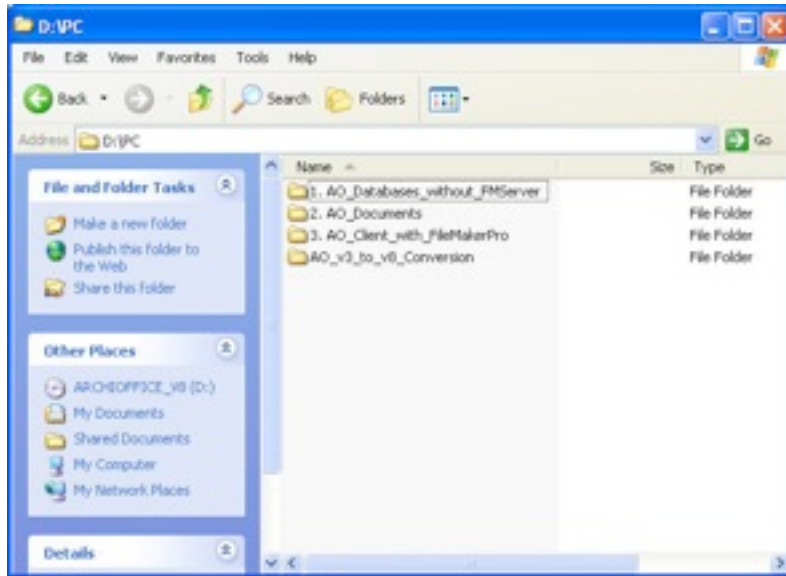
1. Login to the workstation as a user with full admin privileges. You need to perform the installations as an Administrator.
2. Disable all Antivirus software and quit all running applications.
3. Insert the Database installation CD into your computers CD/DVD drive.



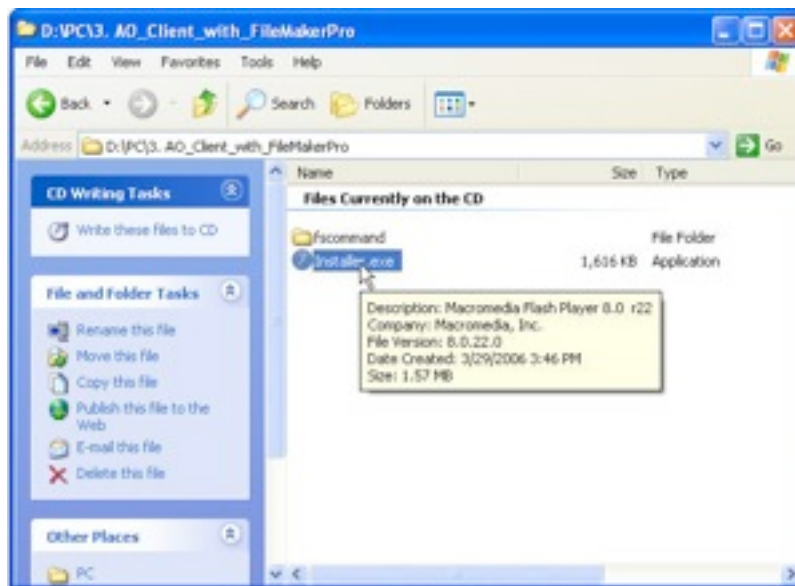
4. Open the appropriate folder for your operating system on your installation CD.
5. To install the Database Client software, open the "PDC_Client_with_FMPro" folder if you purchased the FileMaker Pro 10 software from us, or the "PDC_Client_without_FMPro" folder if you purchased FileMaker Pro 10 elsewhere.

Project Database Co

Developer of
ExhibitOffice + ManagEvent



6. Launch the "Installer.exe" application.

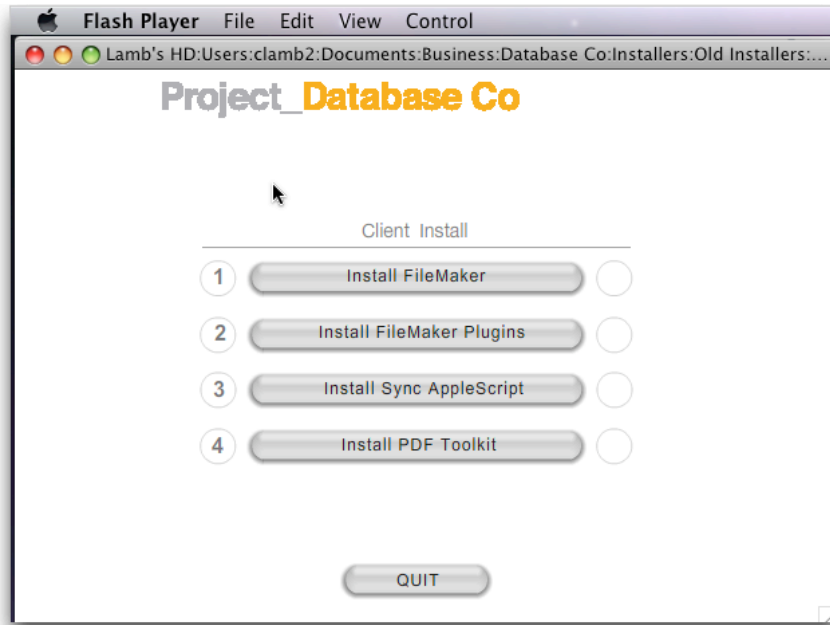


7. Install all the components listed on the menu, in the order they are specified. OSX users will see "Applescript Sync" instead of "OutlookOps", and if you did not purchase FileMaker Pro 10 from us, then your first step would be to install the "FileMaker Pro Plugins".

Agree to any licenses you are presented with, and install the applications into the default locations.

Project Database Co

Developer of
ExhibitOffice + ManagEvent



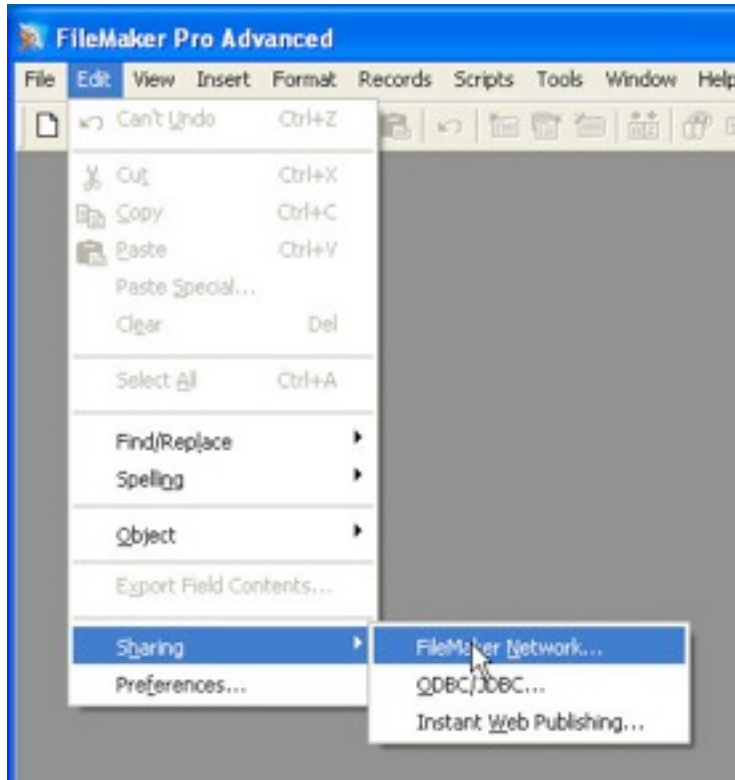
8. **Mac OSX Users:** You need to give all users full read/write privileges to the FileMaker Pro 10 folder. By default, they will not have write privileges to many of the subfolders installed.
9. When FileMaker Pro is installed, it will be installed with Network Sharing turned off. You need to turn this on. To do so, follow these steps:
 - Open FileMaker Pro all by itself. Windows users can launch it by using the "START: Programs" menu. Mac OSX users can launch the FileMaker Pro application from their "Applications" folder where it will have installed.
 - When you first open FileMaker Pro, you will be presented with a dialog that you should dismiss with the "Cancel" button.



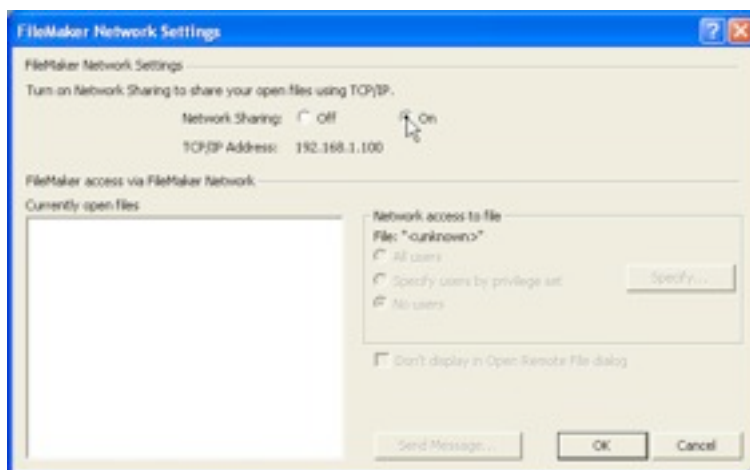
Project Database Co

Developer of
ExhibitOffice + ManagEvent

- Access the FileMaker Pro Edit menu, and select “Sharing: FileMaker Network...”.



- Set the “Network Sharing” option to “On”.



- You have now configured the FileMaker Pro application to share files over the network.
- Keep in mind that FileMaker Pro shares files using Port 5003. If you have a firewall running, you need to make certain that this port is open for FileMaker, if you intend to share the files with other users.

Project Database Co

Developer of
ExhibitOffice + ManagEvent

You have successfully completed a Database Client software installation. You can now Login to the database from the client workstation, provided the P2P Host has logged in, or your FileMaker Server is running, or you are a single-user.



It has been discovered that some Mac OSX users may be experiencing difficulties accessing the database system or functions. This is due to the fact that although the Mac OSX system is saying that the "Database" database folder, the "Documents" folder, and the local "FileMaker Pro 10" folder, and all their respective subfolders, have been configured to enable all users read/write access, that this is not the case. You need to use the tool described in Tech Bulletin 060206 to correct the problem.



All Database users must have full read/write access to their FileMaker Pro folder for document management to work.