

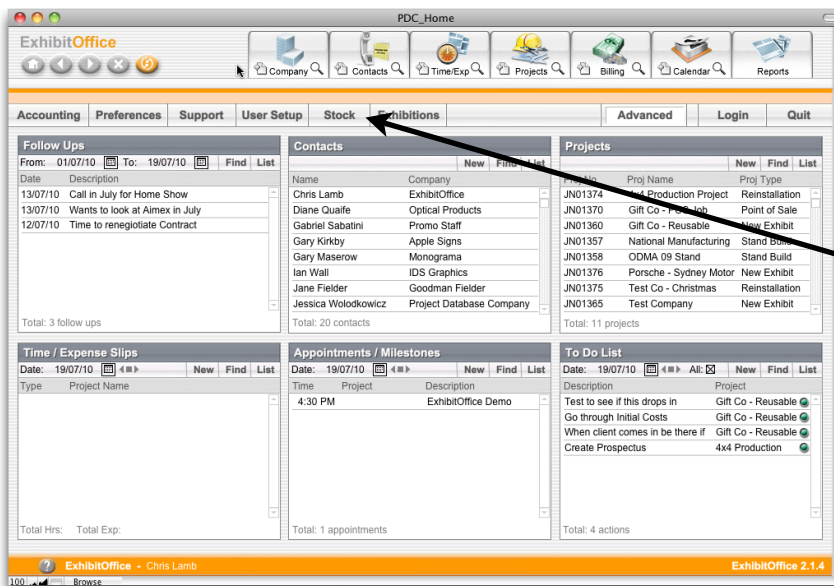
Project Database Co

Developer of
ExhibitOffice + ManagEvent

Projects Stock

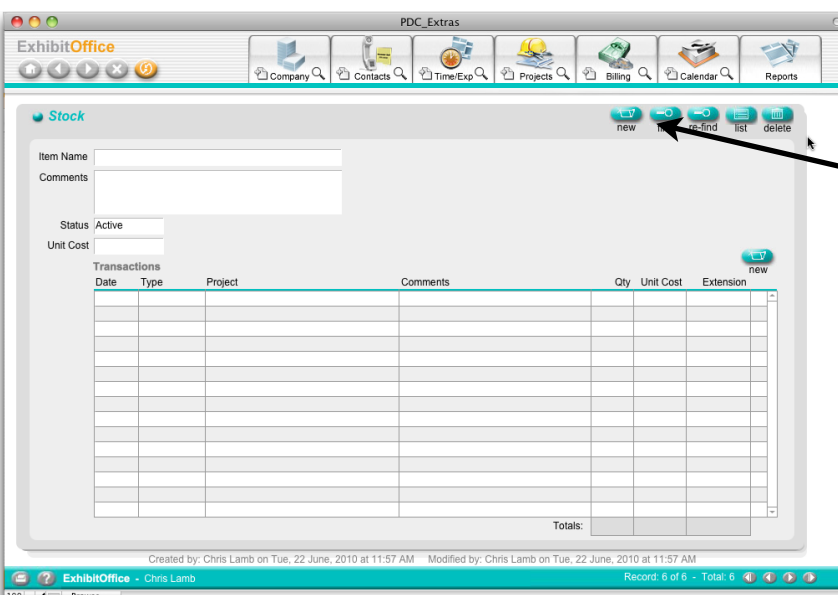
Using this facility items that are bought in bulk can be costed to an individual project.

Initially the items need to be brought into Stock, so from the Home Screen we navigate to Stock



Stock

Then once we are in the Stock Screen we can either create a new entry

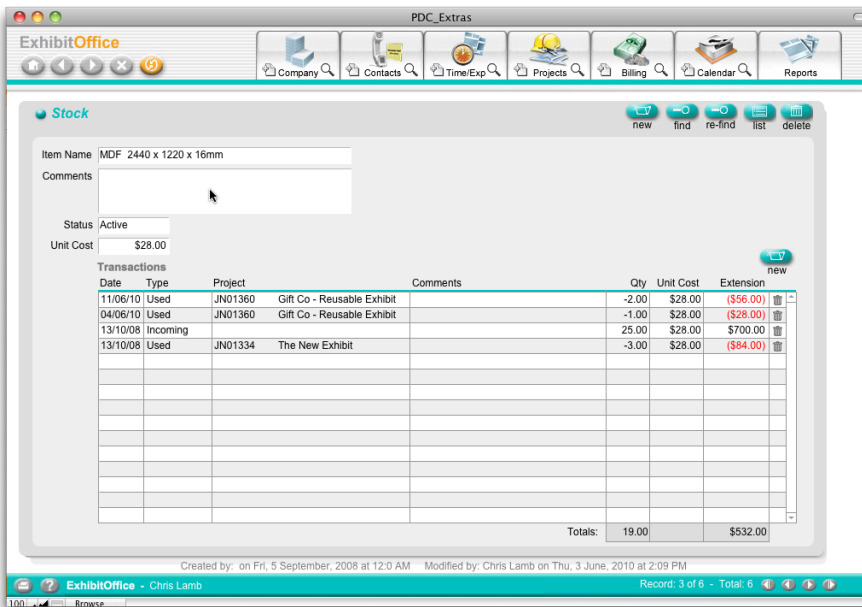


New

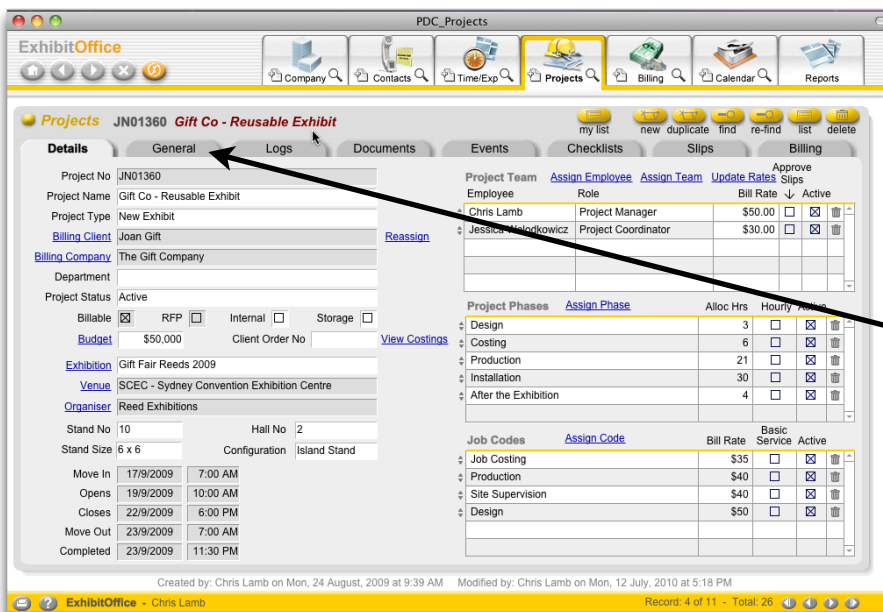
Project Database Co

Developer of
ExhibitOffice + ManagEvent

Or we can go to the List View and choose an category that we have already created to check that there is a category for what we are looking for and to check stock levels.



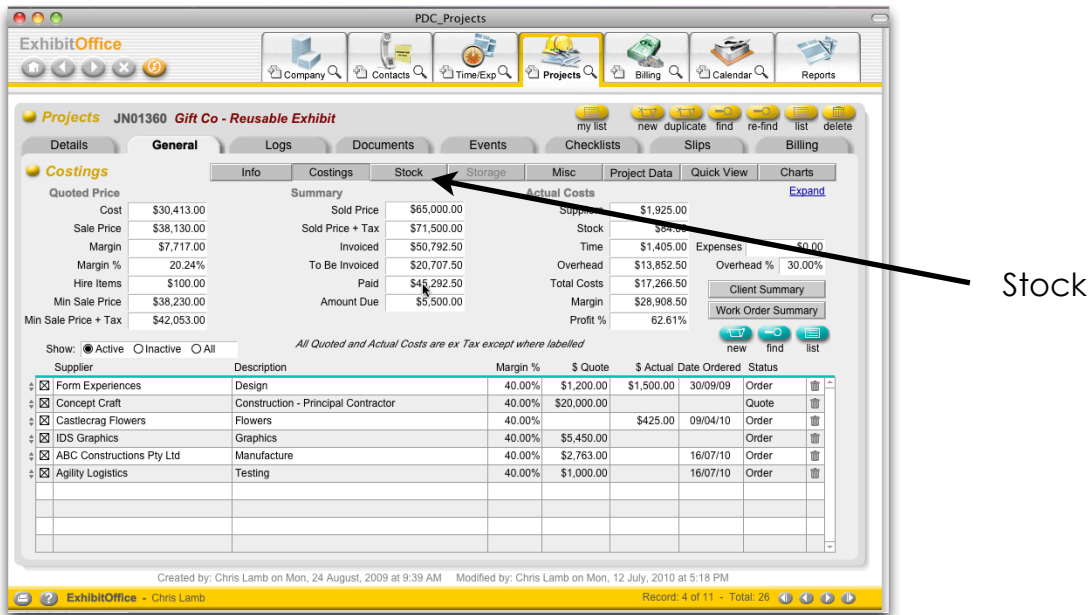
If there is sufficient stock for what we want to cost to a project then we can navigate to our project to the Stock Tab. It is under the General Tab



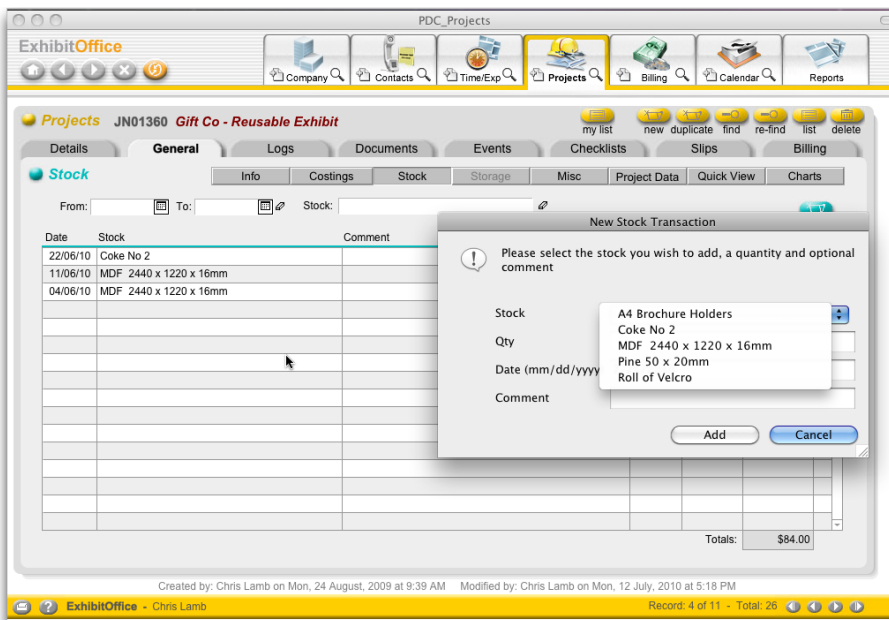
General

Project Database Co

Developer of
ExhibitOffice + ManagEvent



Click on this button then click on "New" choose the stock item you are using in this project, then the "Number" of items



In this instance 1 Roll of Velcro

Project Database Co

Developer of
ExhibitOffice + ManagEvent

You can see here that 1 Roll of Velcro has been added to this project at a cost of \$30.00

Date	Stock	Comment	Qty	Unit Cost	Extension
25/07/10	Roll of Velcro		1.00	\$30.00	\$30.00
22/06/10	Coke No 2		2.00	\$0.00	\$0.00
11/06/10	MDF 2440 x 1220 x 16mm		2.00	\$28.00	\$56.00
04/06/10	MDF 2440 x 1220 x 16mm		1.00	\$28.00	\$28.00
Totals:					\$114.00

Created by: Chris Lamb on Mon, 24 August, 2009 at 9:39 AM Modified by: Chris Lamb on Mon, 12 July, 2010 at 5:18 PM

The total cost of the Stock Items that have been charged to this project is \$114.00

On the Project Costing page the total has been added.

Supplier	Description	Margin %	\$ Quote	\$ Actual	Date Ordered	Status
Form Experiences	Design	40.00%	\$1,200.00	\$1,500.00	30/09/09	Order
Concept Craft	Construction - Principal Contractor	40.00%	\$20,000.00			Quote
Castlecrag Flowers	Flowers	40.00%	\$425.00	\$425.00	09/04/10	Order
IDS Graphics	Graphics	40.00%	\$5,450.00			Order
ABC Constructions Pty Ltd	Manufacture	40.00%	\$2,763.00		16/07/10	Order
Agility Logistics	Testing	40.00%	\$1,000.00		16/07/10	Order

Created by: Chris Lamb on Mon, 24 August, 2009 at 9:39 AM Modified by: Chris Lamb on Mon, 12 July, 2010 at 5:18 PM